

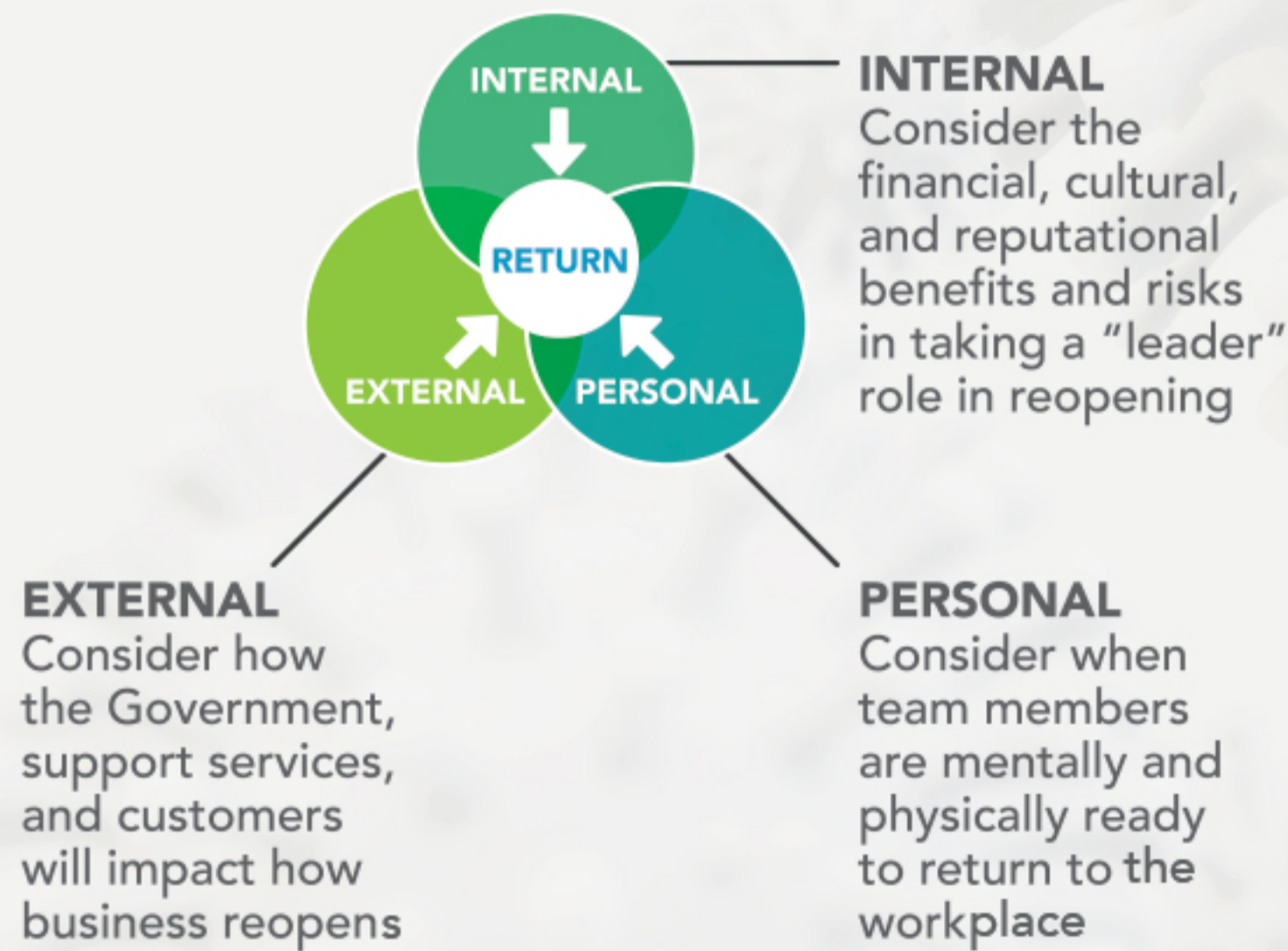
## COVID-19 BUSINESS RESPONSE

### FOUR PHASES OF RETURN

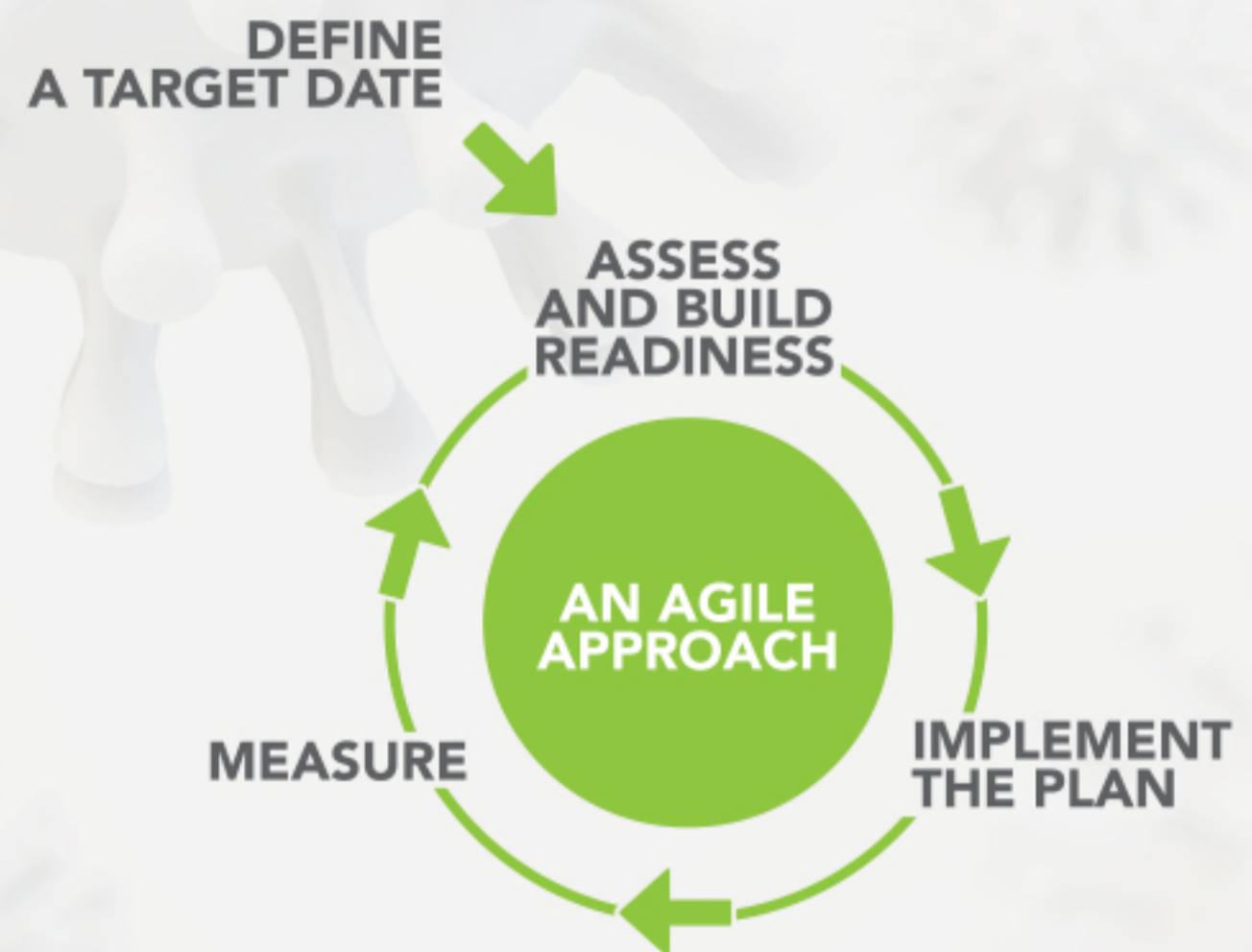


**Initial Re-opening:** How do organizations enable an organized return to the workplace for team members, vendor partners, and the field-force?

### FACTORS IMPACTING RETURN



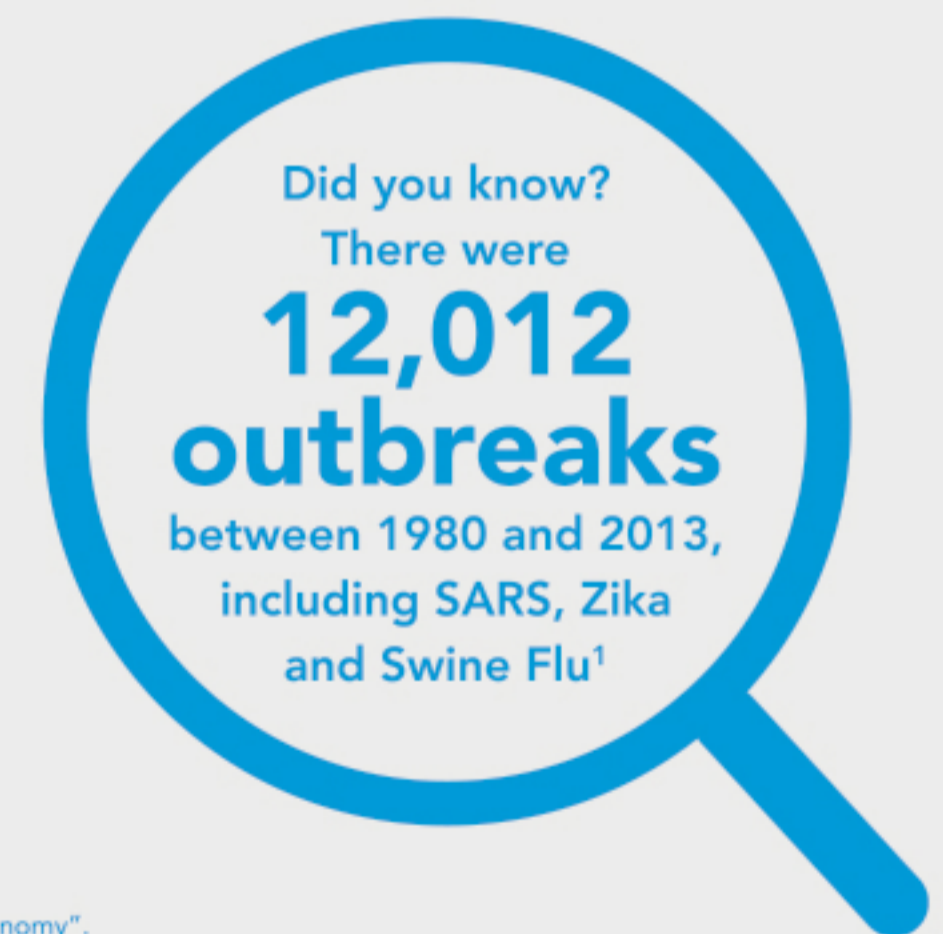
### RETURN-TO WORKPLACE COMPONENTS



### GLOBAL TRENDS WHICH DIRECTLY IMPACT OUTBREAKS



“ If large enterprises fully appreciate the commercial threat, they will no longer be able to justify remaining on the sidelines of efforts to strengthen global health security. –World Economic Forum White Paper from January 2019<sup>1</sup> ”



**FOOTNOTE:**

1. World Forum in Collaboration with Harvard Global Health Institute. "Outbreak Readiness and Business Impact – Protecting the Lives and Livelihood Economics across the Global Economy". World Economic Forum white paper. January 2019. Pgs. 6-7. Downloaded April 7, 2020: [http://www3.weforum.org/docs/WEF%20HGH%20Outbreak\\_Readiness\\_Business\\_Impact.pdf](http://www3.weforum.org/docs/WEF%20HGH%20Outbreak_Readiness_Business_Impact.pdf)



We approach healthcare as five interwoven sectors:

- Health Plans
- Healthcare Technology
- Life Sciences
- Providers
- Public Health

Vynamic's reimagined approach helps clients achieve three valuable outcomes:

- 1 Actionable Strategy
- 2 Operational Intelligence
- 3 Healthy Culture